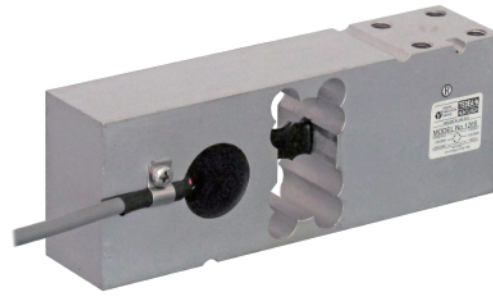


Single-Point Load Cell

1265

- Capacity range : 100kgf..660kgf
- Rigid, anodized aluminum construction
- IP66 protection



Model

Rated Capacity

1265 -

100K	100kgf (980N)
150K	150kgf (1.47kN)
200K	200kgf (1.96kN)
250K	250kgf (2.45kN)
300K	300kgf (2.94kN)
500K	500kgf (4.9kN)
600K	600kgf (5.88kN)
635K	635kgf (6.23kN)
660K	660kgf (6.47kN)

Cable color code

Item	Color
Excitation +	Green
Excitation -	Black
Signal output +	Red
Signal output -	White
Sense +	Blue
Sense -	Brown
Shield	Shield

Specifications

Rated output (R.O.)	2mV/V
Rated output tolerance	±10%
Zero balance	±10%R.O.
Zero return, 30 min	±0.017%LOAD
Total error	±0.02%R.O.
Temperature effect on zero	±0.0023%R.O./°C
Temperature effect on output	±0.001%LOAD/°C
Eccentric loading error	±0.0025%LOAD/cm
Temperature range, compensated	-10°C~+40°C
Temperature range, safe	-30°C~+70°C
Maximum safe overload	150%R.C.
Ultimate central overload	300%R.C.
Excitation, recommended	10V
Excitation, maximum	15V
Input impedance	415Ω±15Ω
Output impedance	350Ω±3Ω
Insulation resistance	>2000MΩ
Cable type	φ5.6, 6-wire, PVC, Single floating screen, AWG26
Cable length	1.5m
Construction	Plated (anodized) aluminum
Environmental protection	IP66
Platform size (max)	800mm×800mm
Recommended torque	25N·m : [100K...300K] 30N·m : [500K...660K]
Weight (approx.)	1.1kg
Nominal (rated) deflection	<0.4mm

Outline dimensions (mm)

