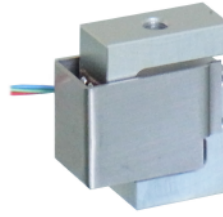


Vacuum-compatible load cell

TCLSV

- Capacities : 10N...500N
- Available to **vacuum** environment
- Suitable for measuring tension and compression in applications where the available space is limited



Model

Rated Capacity	
TCLSV - <input type="text"/>	
10N	10N (1.02kgf)
20N	20N (2.04kgf)
50N	50N (5.10kgf)
100N	100N (10.2kgf)
200N	200N (20.4kgf)
500N	500N (51kgf)

Specifications

Rated output (R.O.)	0.7mV/V : [10N] 1mV/V : [20N...500N]
Rated output tolerance	±20%
Zero balance	±10%R.O.
Nonlinearity	±0.2%R.O.
Hysteresis	±0.2%R.O.
Repeatability	±0.1%R.O.
Temperature effect on zero	±0.05%R.O./°C
Temperature effect on output	±0.05%LOAD/°C
Temperature range, compensated	-10°C~+60°C
Temperature range, safe	-20°C~+80°C
Maximum safe overload	150%R.C.
Excitation, recommended	2.5V
Excitation, maximum	5V
Input impedance (approx.)	350Ω
Output impedance (approx.)	350Ω
Insulation resistance	>1000MΩ (B/E DC50V)
Cable type	PTFE 4-wire, AWG32
Cable length	500mm
Construction	Aluminum : [10N...100N] Stainless steel : [200N, 500N]

Cable color code

Item	Color
Excitation +	Red
Excitation -	White
Signal output +	Green
Signal output -	Blue

Electrical characteristics

Model	Rated deflection	Natural Frequencies (Approx.)	Weight (Approx.)
TCLSV-10N	<0.01mm	4.6kHz	3g
TCLSV-20N		5.1kHz	
TCLSV-50N		8.1kHz	4g
TCLSV-100N		10kHz	
TCLSV-200N		9.2kHz	
TCLSV-500N		10.7kHz	11g

Outline dimensions (mm)

