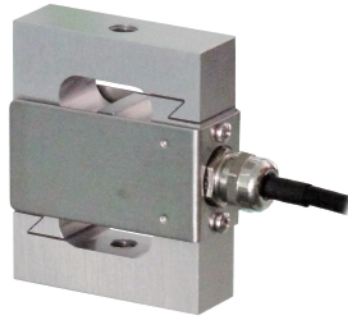


## Tension/Compression S-beam load cell

# TCLM

- Capacities : 50N...1kN
- Wide capacity range
- High accuracy



## Model

Rated Capacity

TCLM - 

50N	50N (5.1kgf)
100N	100N (10.2kgf)
200N	200N (20.4kgf)
500N	500N (51kgf)
1000N	1kN (102kgf)

## Specifications

Rated output (R.O.)	2mV/V
Rated output tolerance	±5%
Zero balance	±10%R.O.
Nonlinearity	±0.03%R.O.
Hysteresis	±0.03%R.O.
Repeatability	±0.03%R.O.
Temperature effect on zero	±0.003%R.O./°C
Temperature effect on output	±0.003%LOAD/°C
Temperature range, compensated	-10°C~+60°C
Temperature range, safe	-10°C~+70°C
Maximum safe overload	150%R.C.
Excitation, recommended	10V
Excitation, maximum	15V
Input impedance (approx.)	410Ω±10Ω
Output impedance (approx.)	350Ω±5Ω
Insulation resistance	>1000MΩ (B/E DC50V)
Cable type	φ5, 4-wire, PVC, braid shield
Cable length	3m
Construction	Aluminum

## Cable color code

Item	Color
Excitation +	Red
Excitation -	White
Signal output +	Green
Signal output -	Blue
Shield	Yellow

## Mechanical characteristics

Model	Rated deflection	Natural Frequencies (Approx.)	Weight (Approx.)
TCLM-50N	<0.3mm	0.28kHz	150g
TCLM-100N		0.42kHz	
TCLM-200N		0.62kHz	
TCLM-500N		0.95kHz	
TCLM-1000N		1.2kHz	

## Outline dimensions (mm)

