

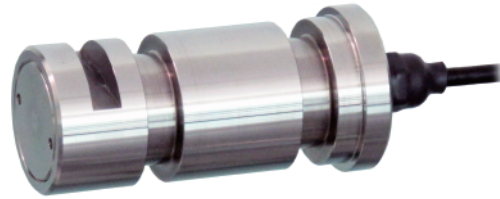
## Pin-Type Stainless Steel Load Cell

## LPN

- Capacity range : 5kN...1MN

The LPN pin load cell is made of stainless steel and offers maximum resistance to impacts and overloads. The operation of the LPN load cell is double-ended shear beam.

Model LPN is insensitive to side loads and it has been designed for shooting, weighing or anti-overhead systems for overhead cranes.



## Model

Rated Capacity ※

LPN - **500L...100T**

※500L:500kgf, 100T:100tf

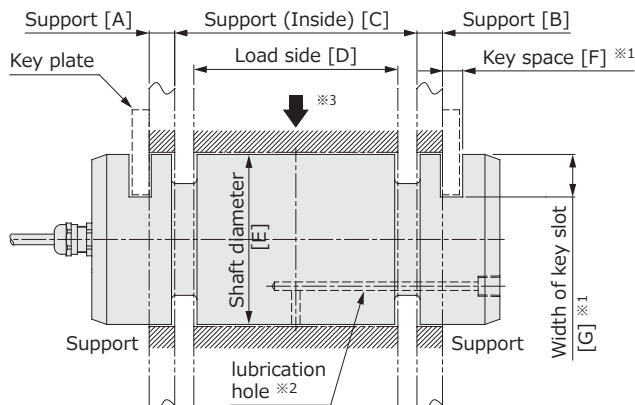
## Specifications

Rated output (R.O.)	0.5mV/V~1mV/V
Zero balance	±10%R.O.
Nonlinearity	±1%R.O.~±2%R.O.
Hysteresis	±1%R.O.~±2%R.O.
Repeatability	±1%R.O.~±2%R.O.
Temperature effect on zero	±0.05%R.O./°C
Temperature effect on output	±0.05%LOAD/°C
Temperature range, compensated	-10°C~+60°C
Temperature range, safe	-20°C~+70°C
Maximum safe overload	150%R.C.
Ultimate overload	500%R.C.
Excitation, recommended	10V
Excitation, maximum	15V
Input impedance (approx.)	700Ω
Output impedance (approx.)	700Ω
Insulation resistance	>1000MΩ (B/E DC50V)
Cable type	φ5 or φ9, 4-wire, PVC, braid shield
Cable length	5m (upon request)
Construction	Stainless steel

## Cable color code

Item	Color
Excitation +	Red
Excitation -	White
Signal output +	Green
Signal output -	Blue or Black
Shield	Shield

## Outline dimensions (mm)



Note) Please request

※1. Which side to put the key slots

※2. Need or not the holes

※3. Load direction

Please share the Sheave pin assembly drawing.