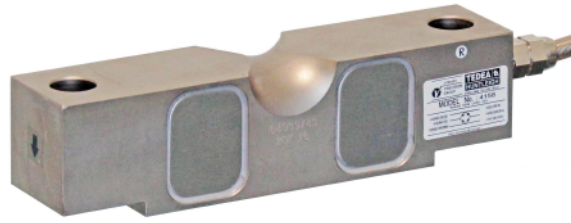


Alloy Steel Double-Ended Shear Beam

4158

- Capacities : 4.5tf...34tf
- Nickel plated alloy steel construction
- IP67 protection



Model

Rated Capacity

4158 -

10klb	10klb (4.5tf)
20klb	20klb (9.1tf)
25klb	25klb (11.3tf)
40klb	40klb (18.1tf)
50klb	50klb (22.7tf)
60klb	60klb (27.2tf)
75klb	75klb (34tf)

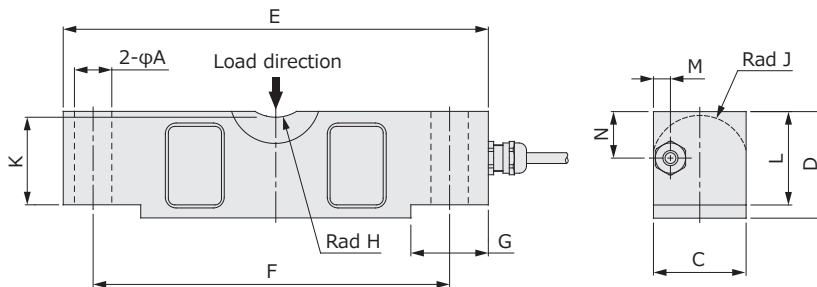
Cable color code

Item	Color
Excitation +	Red
Excitation -	Black
Signal output +	Green
Signal output -	White
Sense +	Blue
Sense -	Brown
Shield	Shield

Specifications

Rated output (R.O.)	3mV/V
Rated output tolerance	±2.5%
Zero balance	±3%R.O.
Zero return, 30 min	±0.05%LOAD
Total error	±0.05%R.O.
Temperature effect on zero	±0.006%R.O./°C
Temperature effect on output	±0.005%LOAD/°C
Temperature range, compensated	-10°C~+40°C
Temperature range, safe	-30°C~+70°C
Maximum safe overload	150%R.C.
Ultimate central overload	300%R.C.
Excitation, recommended	10V
Excitation, maximum	15V
Input impedance	780Ω±20Ω
Output impedance	705Ω±5Ω
Insulation resistance	>2000MΩ
Cable type	φ5.6, 6-wire, braided, PVC, Dual floating screen
Cable length	5m : [10klb...25klb] 15m : [40klb...75klb]
Construction	Nickel-plated alloy steel
Environmental protection	IP67
Weight (approx.)	2.5kg : [10klb...25klb] 5kg : [40klb] 8.5kg : [50klb...75klb]
Nominal (rated) deflection	<0.4mm

Outline dimensions (mm)



Dimensions

Model	φA	C	D	E	F	G	Rad H	Rad J	K	L	M	N
4158-10klb...25klb	17.3	42.9	49.3	196.9	165.1	35.9	19.1	22.9	41.4	43.2	8.8	13.6
4158-40klb	20.6	49.3	62.0	260.4	215.9	49.0	25.4	28.5	50.8	53.3	9.0	31.0
4158-50klb...75klb	26.9	62.0	74.7	260.4	215.9	49.0	25.4	34.8	64.5	67.3	10.4	37.4