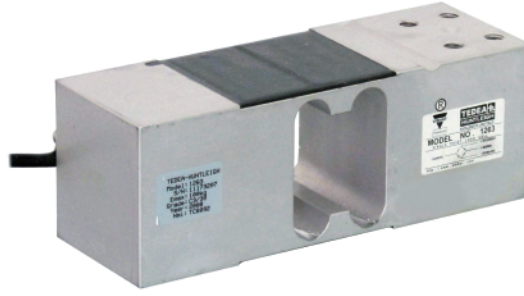


Aluminum High Capacity Single-Point Load Cell

1263

- Capacities : 50kgf..635kgf
- Aluminum construction
- IP66 protection



Model

Rated Capacity

1263 -

50K	50kgf (490N)
100K	100kgf (980N)
150K	150kgf (1.47kN)
200K	200kgf (1.96kN)
250K	250kgf (2.45kN)
300K	300kgf (2.94kN)
500K	500kgf (4.9kN)
635K	635kgf (6.23kN)

Cable color code

Item	Color
Excitation +	Green
Excitation -	Black
Signal output +	Red
Signal output -	White
Shield	Shield

Specifications

Rated output (R.O.)	2mV/V
Rated output tolerance	±10%
Zero balance	±10%R.O.
Zero return, 30 min	±0.025%LOAD
Total error	±0.02%R.O.
Temperature effect on zero	±0.006%R.O./°C
Temperature effect on output	±0.0014%LOAD/°C
Eccentric loading error	±0.005%LOAD/cm
Temperature range, compensated	-10°C~+40°C
Temperature range, safe	-20°C~+70°C
Maximum safe overload	150%R.C.
Ultimate central overload	300%R.C.
Excitation, recommended	10V
Excitation, maximum	15V
Input impedance	415Ω±20Ω
Output impedance	350Ω±3Ω
Insulation resistance	>2000MΩ
Cable type	φ5.6, 4-wire, PVC Single floating screen, AWG26
Cable length	1.5m
Construction	Aluminum
Environmental protection	IP66
Platform size (max)	600mm×600mm
Recommended torque	25N·m : [50K...300K] 30N·m : [500K, 635K]
Weight (approx.)	1.9kg
Nominal (rated) deflection	<0.4mm

Outline dimensions (mm)

