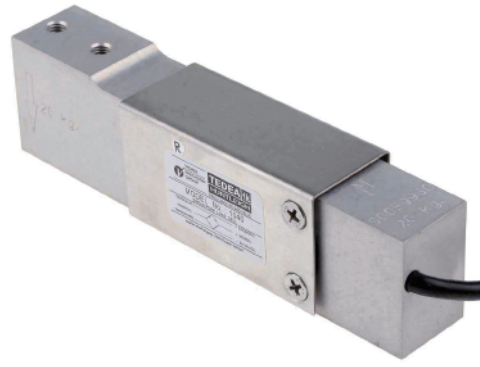


Aluminum Single-Point Load Cell

1040

- Capacities : 5kgf...100kgf
- Aluminum construction
- IP65 protection



Model

Rated Capacity

1040 -

5K	5kgf (49N)
7K	7kgf (68.6N)
10K	10kgf (98N)
15K	15kgf (147N)
20K	20kgf (196N)
30K	30kgf (294N)
50K	50kgf (490N)
75K	75kgf (735N)
100K	100kgf (980N)

Cable color code

Item	Color
Excitation +	Green
Excitation -	Black
Signal output +	Red
Signal output -	White
Sense +	Blue
Sense -	Brown
Shield	Shield

Specifications

Rated output (R.O.)	2mV/V
Rated output tolerance	±10%
Zero balance	±10%R.O.
Zero return, 30 min	±0.025%LOAD
Total error	±0.02%R.O.
Temperature effect on zero	±0.006%R.O./°C
Temperature effect on output	±0.0014%LOAD/°C
Eccentric loading error	±0.0074%LOAD/cm
Temperature range, compensated	-10°C~+40°C
Temperature range, safe	-20°C~+70°C
Maximum safe overload	150%R.C.
Ultimate central overload	300%R.C.
Excitation, recommended	10V
Excitation, maximum	15V
Input impedance	415Ω±15Ω
Output impedance	350Ω±3Ω
Insulation resistance	>2000MΩ
Cable type	φ5.6, 6 wire, PVC Single floating screen, AWG26
Cable length	1m
Construction	Plated (anodized) aluminum
Environmental protection	IP65
Platform size (max)	400mm×400mm
Recommended torque	7N·m : [5K...30K] 10N·m : [50K...100K]
Weight (approx.)	350g
Nominal (rated) displacement	<0.4mm

Outline dimensions (mm)

